

# ONLINE AUCTION

## OFF LEASE STRADDLE LIFT, TELEHANDLER, LIFT TRUCKS & SCISSOR LIFTS

ONLINE ONLY AUCTION OF (40) LATE  
MODEL LIFT TRUCKS OF ALL TYPES  
INCLUDING MULTI-DIRECTIONAL,  
TELEHANDLERS, PNEUMATIC / SOLID  
TIRE AND ELECTRIC LIFTS TO 30,000  
LBS., MAN LIFTS, SWEEPERS, PALLET  
TRUCKS, AND SUPPORT EQUIPMENT  
- MOST NEW LATE 2000'S

**LOCATION 1** – 6600 Stockton Road  
Fairfield (Cincinnati), Ohio 45014

**LOCATION 2** – Warehouse in Utica (Detroit),  
Michigan 48315

## ONLINE BIDDING ENDS:

**WEDNESDAY, DECEMBER 21ST AT 11:00 AM (EST)**

Inspection for All Locations: Tuesday, December 20th from 10:00 AM to 4:00 PM

**18% ON-LINE BUYERS PREMIUM**

**DIRECTIONS:** 6600 Stockton Rd., Fairfield, OH – Located Approx. 20 Miles North of Downtown Cincinnati from I-275, Just west of I-75. Proceed to Exit 41 (Ohio Rt 4) and Proceed North Approx. 1-3/4 Miles to Steward Rd. Turn Right onto Steward and Proceed Approx. 1/4 Mile to Stockton Rd., Just before Railroad Tracks, Turn Left & Proceed to Auction Site on Right.

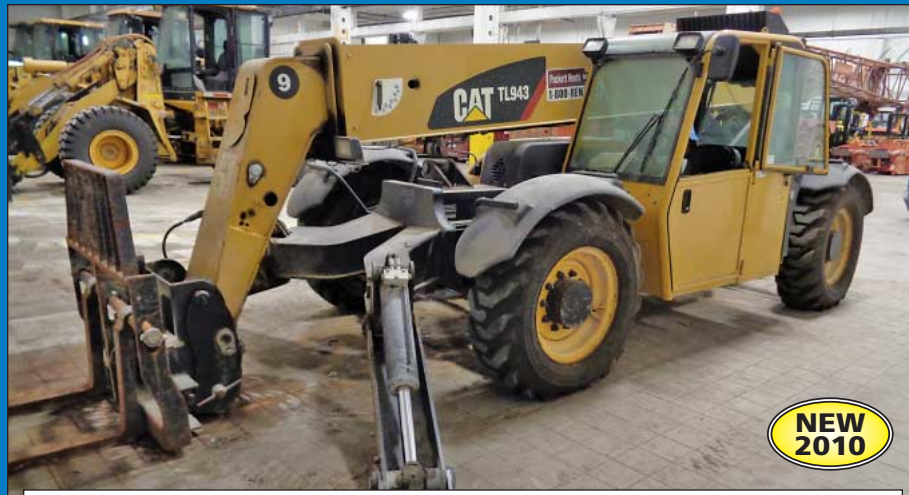
### AUCTIONEERS:

Cincinnati Industrial Auctioneers, Inc. – OH License No. 63-1983-10439



**CINCINNATI INDUSTRIAL AUCTIONEERS**

auctioneers | appraisers | since 1961 | [cia-auction.com](http://cia-auction.com) | [info@cia-auction.com](mailto:info@cia-auction.com)  
2020 Dunlap St., Cincinnati, Ohio 45214 Phone 513-241-9701 Fax 513-241-6760



**NEW  
2010**

**9,000 Lb. Caterpillar Model TL943 Four-Wheel Drive All Terrain Telehandler**

**FIRST CLASS MAIL!**

PRE-SORT  
FIRST CLASS  
U.S. POSTAGE  
**PAID**  
CINCINNATI, OHIO  
PERMIT NO. 3593



### Important Mail

TO BE DIRECTED TO THE ATTENTION  
OF EXECUTIVE PERSONNEL

# ONLINE AUCTION

## OFF LEASE STRADDLE LIFT, TELEHANDLER, LIFT TRUCKS & SCISSOR LIFTS

LOCATION 1 – 6600 Stockton Road  
Fairfield (Cincinnati), Ohio 45014

LOCATION 2 – Warehouse in Utica (Detroit),  
Michigan 48315

**ONLINE BIDDING ENDS:  
WEDNESDAY, DECEMBER 21ST  
AT 11:00 AM (EST)**

Inspection for All Locations: Tuesday, December 20th  
from 10:00 AM to 4:00 PM



8,000 Lb. Combilift Model C8000 LP Gas Pneuatic Tire Multi-Directional Side Loader (New 2011)

### OHIO LOCATION

#### (7) FORK LIFTS 9,000 LB. TO 15,000 LB.

15,000 Lb. Hyster Model S150A LP Gas Solid Tire Lift Truck

(2) 12,000 Lb. Yale Model GLC120 LP Gas Cushion Tire Lift Trucks (New 2012)

12,000 Lb. Hyster Model S120XL2S LP Gas Solid Tire Lift Truck

11,000 Lb. Caterpillar Model GC535KSPR LP Gas Solid Tire Lift Truck (New 2011)

11,000 Lb. Toyota Model 7FGCU55 LP Gas Solid Tire Lift Truck (New 2009)

9,000 Lb. Toyota Model 7FBCU45 Sit-Down Electric Lift Truck (New 2004)

(11) 6,000 LB. TO 8,000 LB. FORKLIFTS  
(2) 8,000 Lb. Hyster Model S80XL LP Gas Solid Tire Lift Trucks

(2) 7,000 Lb. Hyster Model S70FT LP Gas Cushion Tire Lift Trucks (New 2010)

(3) 6,000 Lb. Hyster Model S60FT LP Gas Cushion Tire Lift Trucks (New 2011)

(4) 6,000 Lb. Nissan Model MCUIF2A30LV LP Gas Cushion Tire Lift Trucks (New as 2008)

### MICHIGAN LOCATION

#### STRADDLE LIFT TRUCK

#### COMBILIFT MULTI-DIRECTIONAL SIDE LOADER

8,000 Lb. Combilift Model C8000 LP Gas Pneuatic Tire Multi-Directional Side Loader (New 2011)

#### TELEHANDLER

9,000 Lb. Caterpillar Model TL1943 Four-Wheel Drive All Terrain Telehandler (New 2010)

#### ALL TERRAIN SCISSOR LIFTS

(3) Genie Model GS-2668RT Four-Wheel Drive All Terrain Scissor Lifts (New as 2008)

#### FORK LIFTS 20,000 LB. AND UP

30,000 Lb. Taylor Model THC-300S Diesel Power Cushion Tire Lift Truck (New 2007)

(3) 9,000 Lb. Toyota Model 7FDU45 Diesel Power Solid Pneuatic Tire Lift Trucks (New 2008)

22,000 Lb. Silent Hoist Model FKS11 Diesel Power Cushion Tire Lift Truck (New 2010)

(18) FORK LIFTS 9,000 LB. TO 15,000 LB.

(6) 15,000 Lb. Hyster Model S155FT Diesel Power Cushion Tire Lift Trucks (New 2012)

#### (8) 5,000 LB. FORK LIFTS

(2) 5,000 Lb. Linde Model H25CT LP Gas Solid Tire Lift Trucks w/ Cascade Push Pull Attachment (New 2012)

5,000 Lb. Hyster Model S50FT LP Gas Solid Tire Lift Trucks (New 2011)

(5) 5,000 Lb. Yale Model GLC050 LP Gas Solid Tire Lift Trucks (New 2006 to 2012)

#### ELECTRIC STACKERS

4,500 Lb. Yale Model M20R45071 Electric Walk Behind Stacker

2,000 Lb. Presto Model PPS2200-125AS Electric Walk Behind Stacker

#### SCISSOR LIFTS

Skyjack Model SJIII 6826 Pneumatic Electric Pneumatic Tire Scissor Lift (New 10/2003)

MEC Model 2034HT Electric Scissor Lift

#### DUMP TRUCK

2005 Chevrolet Model 4500 Diesel 15 Cubic Yard Dump Truck

#### ADVERTISING TRUCK

2010 Ford F-150XL Pick Up Truck w/ (2) 9' LED Video Board Advertising Screens

#### PERSONNEL CARRIERS / GOLF CARTS

(3) 2011 Club Car Model DS Two-Person Gasoline Powered Golf Carts

#### SWEEPERS & SCRUBBERS

Tennant 6400 Sit-Down Electric Floor Sweeper

#### PERSONNEL CARRIERS / GOLF CARTS

Club Car Model Carryall 6 Electric Aluminum Body Flat Bed Personnel Carrier / Maintenance Cart (New 2011)

Club Car Model Carryall 1 Electric Dump Body Personnel Carrier / Maintenance Cart (New 2011)

#### ELECTRIC PALLET TRUCKS & TUGGERS

(1) 6,000 Lb. Hyster W60Z Pallet Jacks w/ Batteries & Chargers

(5) Hyster T7ZAC Tuggers



Tennant Model 7300 Electric Sit-Down Floor Scrubber



(3)10,000 Lb. Hyster Model S100FTBCS LP Gas Cushion Tire Lift Trucks (New as 2012)



(5) 8,000 Lb. Hyster Model H80FT LP Gas Solid Pneumatic Tire Lift Trucks (New 2012)



(6) 15,000 Lb. Hyster Model S155FT Diesel Power Cushion Tire Lift Trucks (New 2012)

See website [www.cia-auction.com](http://www.cia-auction.com) For Detailed Specifications, Photos, Link To Online Bidding And Terms Of Sale. Possible Additions, See Auction catalog for final list of available items.



30,000 Lb. Taylor Model THC-300S Diesel Power Cushion Tire Lift Truck (New 2007)



22,000 Lb. Silent Hoist Model FKS11 Diesel Power Cushion Tire Lift Truck (New 2010)



12,000 Lb. Toyota Model 7FDU60 Diesel Power Solid Pneumatic Tire Lift Truck (New 2008)



7,000 Lb. Toyota Model 7FGCU35-BCS LP Gas Cushion Tire Lift Truck (New 2012)



(3) Genie Model GS-2668RT Four-Wheel Drive All Terrain Scissor Lifts (New as 2008)



(2) 7,000 Lb. Mitsubishi Model FG35N LP Gas Solid Pneumatic Tire Lift Trucks (New 2010)